



RGSQ Bulletin

ISSN 1832-8830

August 2022

Vol 57 no 07

Published by The Royal Geographical Society of Queensland Ltd., a not-for-profit organisation established in 1885 that promotes the study of geography and encourages a greater understanding and enjoyment of the world around us.

Patron: [Her Excellency the Honourable Dr Jeannette Young PSM Governor of Queensland](#)

President: Mr John Tasker

What's happening on Council?

The Society's Council met on Tuesday 19 July. Items of interest include:

- Work is progressing on reviewing the Society's strategic plan.
- The 2022/23 budget was discussed and approved.
- The paperwork necessary for a company to change auditors keeps coming!
- The new auditors, Pilot Chartered Accountants, have started auditing the Society's 2021/22 finances.
- Steve Turton can no longer present the August lecture. Instead, it will be delivered by Brett Dascombe, well-known for his innovative practices using spatial technologies in teaching.
- Society members packed the certificates and results of the Australian Geography Competition for return to schools – a big thank you!
- Geography's Big Week Out for high-achieving Year 11 students was held in Darwin and Litchfield National Park 3-7 July. Full story next Bulletin.
- The Australian team competed from the Gold Coast in the virtual International Geography Olympiad, 11-18 July. We received one gold medal and one bronze. Full story next Bulletin.
- The Society is donating its glass slide collection to the State Library of Queensland. This will ensure the conditions for its proper preservation. The slides will be selectively digitised with the Society receiving the digital files.
- The Collections Committee has been liaising with David Carstens on his donated, and other, planispheres.
- The Publications Committee is working with the University of Queensland Library to make digital copies of our Scientific Studies reports more widely available.
- First aid and CPR training will be made available to members leading trips to keep these skills up to date.
- The Treks and Activities Committee has revised their procedure manual with an emphasis on safety and risk management.
- The Geography in Conversation and Map Groups have run successful events, with more planned.

For further information on any item, please talk to a Society Councillor at a trip or lecture or send an email to info@rgsq.org.au.

WHAT'S ON

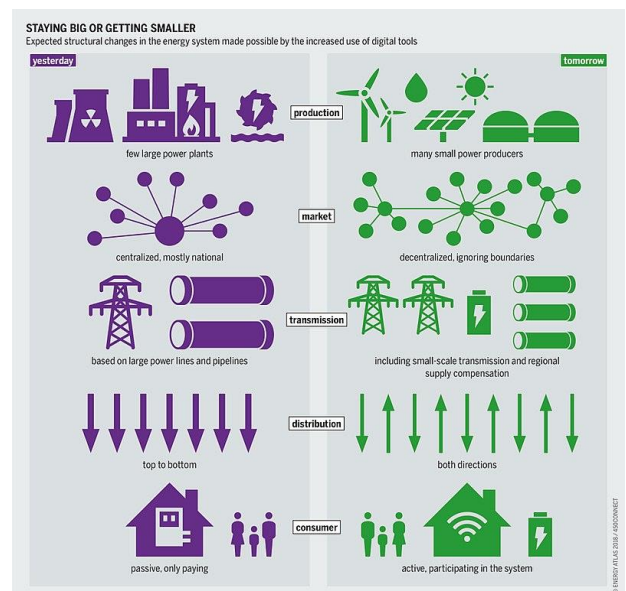
For all upcoming RGSQ events, please visit the Society's website www.rgsq.org.au under 'What's On'.

Geography in Conversation

A Power Network Fit for Purpose

August 23, 2022

Register: <https://rgsq.org.au/event-4897113>



With guest speakers, **Professor Paul Simshauser**, CEO Powerlink, **Mr David Shankey**, the Deputy Director-General of the Energy Division, Department of Energy and Public Works and **Mr Trevor Berrill**, Qld RENEW.

The Q & A forum will enable you to ask questions on the relationship between regulators and suppliers in the power industry, and particularly in the move away from fossil fuels and the transition to renewable clean, green, and affordable power for Australia. How does our power come to us and what does it mean for households?

Come along for light refreshments before settling in for an informed conversation on a topic of interest to us all.

Members registering please post your questions on notice to the GIC forum:

<https://rgsq.org.au/geographyinconversation/>

OR non-members

Email: questionsonnotice@gmail.com

Time: 5:30pm light refreshments – doors open at 5:15pm

Q&A Forum 6:00 – 7:30pm

Address: Gregory Place, Level 1, 28 Fortescue St, Spring Hill.

Cost: \$5.00 for refreshments, included in registration

Cost: \$5:00 Members

\$10:00 Non-members

Image source: Wikipedia: Graphic: Bartz/Stockmar, CC BY 4.0

Pamela Tonkin, Co-Convenor

Map Group Presentation

Early History of Lamington National Park

presentation by Neville McManimm, RGSQ member

9 August 2022, 10:00 AM – 12:00 PM

@Gregory Place, 1/28 Fortescue St, Spring Hill Qld
4000

Register: <https://rgsq.org.au/event-4896031>



Using slides, and early maps, this talk will be on the events leading up to the creation of the National Park and some events that happened after its proclamation.

Neville has extensive knowledge spanning several decades working and tramping around Lamington National Park. This presentation will be a prelude to RGSQ's excursion to Binna Burra later in the year.

The activity was attended by 17 members travelling by coach. It started from Enoggera with a pickup at Petrie. Although there was some rain in Brisbane early in the day, the weather cleared and was fine and cloudy as we travelled north.

On the way, as the coach travelled through the forest, a member, John Nowill, a former forester, gave a very informative talk about the development of softwood plantations north of Brisbane.

The Glass House Mountains lookout lies at the heart of the Glass House Mountains and provides dramatic views of them. It is also at the eastern boundary of Jinibara country.

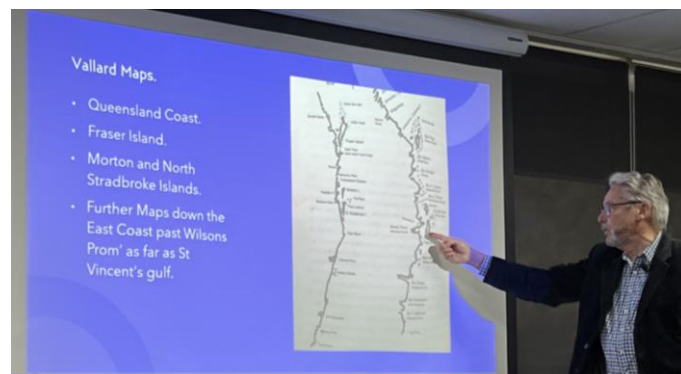
At Woodfordia, we started with an introduction to country on the Hill by Jinibara man, Jason Murphy, with the Glass House Mountains as a backdrop. Then, we enjoyed a bushtucker lunch at the Festival Hall, a centre for Jinibara activities, where Jason talked further about country, culture, and indigenous issues.

The Jinibara are a grouping of four clans occupying country from the Upper Mary Valley to the southern D'Aguilar Range. Indigenous neighbours include the Kabi Kabi/Gubbi Gubbi towards the coast and the Waka Waka to the north-west. In the 1950s, LP Winterbotham, an anthropologist from the University of Queensland, conducted and documented a series of interviews with a Jinibara man, Gaiarbau (aka Willie McKenzie) who outlined on a map the territory occupied by the clans, as well as cultural information.

This documentation underpinned a Native Title claim, which was determined in 2012. A map of the determination is available through the Native Title Tribunal website.

Ralph Carlisle, event coordinator

Report: Map Group Portuguese Maritime talk



On 23 June, Map Group held a Morning Tea talk with David James. The discussion was on Portuguese Maritime Navigators and proved to be most interesting.

Our speaker, David James, introduced us to Prince Henry, the Navigator also known as Dom Henrique of Portugal. He was a central figure in the early days of the Portuguese Empire, and through his administrative direction, is regarded as the main initiator of what would be known as the Age of Discovery. During the 15th and 16th centuries, Portuguese sailors mapped a number of coasts including Cape York Peninsula and David was able to show us these areas on a variety of maps.

The Vallard Map depicting the East Coast of Australia was intriguing. Another successful Map Group event well attended both in person and by Zoom.

Kay Rees, Map Group



REPORT – RGSQ JINIBARA DAYTRIP 6 July 2022



RGSQ group, Jinibara trip, Treks and Activities Committee

As it was NAIDOC Week, the RGSQ members activity was indigenous in its focus - a daytrip to the Jinibara People's Aboriginal Corporation centre at Woodfordia, the grounds of the Woodford Folk Festival. This daytrip went to the Glass House Mountains lookout for morning tea, then to Woodfordia for a cultural talk and bushtucker lunch.

Report: Geography in Conversation June Forum



The second forum in the Geography in Conversation series was again well attended, with over 30 people braving the cold winter's night to head into the RGSQ office. Titled 'Wetlands or Development', the panellists discussed the need for better protection of the shoreline and surrounding areas of Toondah Harbour. Given its status as a RAMSAR site, there was furious agreement on the dangers of insensitive property development.

Joshua Wilson, PhD student researching the role drones could play in shorebird conservation, and Chris Walker, Secretary of Redlands 2030, were the panellists, with Dr Keith Treschman as Moderator. It was unfortunate that requests went unanswered for development advocates to join the conversation, as it would have been interesting to consider their replies to the issues raised.

What became clear is that development of the Brisbane area is accepted to be necessary, however this development should be sensitive to fragile ecosystems. With some of the shore birds migrating around the globe each year to refresh and rejuvenate at Toondah Harbour, a decline in feeding sites directly and negatively impacts bird populations. Examples of developments that have taken into consideration wildlife were offered by the panellists as models of what could be achieved. Despite this, the point remained – a RAMSAR site is not a great place for residences, shops, and hotels.

Coming up on Tuesday 26 July - [Queen's Wharf Development, Brisbane River Precincts and Lifestyles](#). There are still spaces left. We hope to see you there.

Stephen Schwer, *Geography in Conversation Co-coordinator*

Thank you

A big thanks to the Society members who packed up the Australian Geography Competition certificates and results to go back to students:

Ralph Carlisle, Mary Comer, John Fairbairn, Margaret Hardy, Laurelle and Len Lowry, Neville McManimm, Ian Peacock, Giselle Pickering, Kay and Graham Rees, Sue Reid, Pamela Tonkin

We really appreciate your answering the call for help. Our Society's members give such great support to the Competition.

Kath Berg *on behalf of the Competition Committee*

Supper Volunteers Required

A feature of RGSQ monthly meetings has been the provision of supper at the end of the formal lecture; this allowing members to catch up over tea, coffee, and a tasty array of party food. This would not happen without member volunteers. In the main, past volunteers have been longstanding and older members, but the list of willing volunteers has in recent times dramatically fallen short of requirements. The aftermath of Covid19 and the introduction of attending by Zoom is partly to blame.

Since taking on the position of Supper Roster Coordinator, I have tried to arrange that no volunteer has to help with supper more than once per year. For this to happen, we must have at least 12 willing members on the list.

An incentive for more members to come forward is that you get reimbursed for your food contribution, allowed to park in the basement car park on the lecture night that you volunteer, and with luck only once per year.

So, if you currently do not volunteer for anything else at RGSQ, we badly need more members to join our Supper Roster. Please advise the office of your decision at 3368 2066 or email info@rgsq.org.au.

Ron Owen, *Supper Coordinator*

Vale Jim Skinner

It is with great sadness that I report the passing of long-time colleague, geographer and demographer, Jim Skinner on 23 June 2022 at the age of 84.



Jim was originally from the US, where he served three years in the US army during his undergraduate days and gained his Ph.D. in Geography and Demography at the University of Florida in 1980. He came to Australia in 1974 having been appointed to the lecturing staff of the Department of Geography at the University of Queensland. There he established and directed the Applied Population Research Unit (APRU) within the Department of Geography from 1980-1999, significantly raising the profile of academic demography at UQ and within Queensland. Under Jim's direction APRU developed locational computer modelling and population forecasts for government agencies seeking to plan for public amenities such as roads, schools, and hospitals. Jim was Acting and then Head of the Department of Geography, UQ between 1982-1986.

My personal reflection is of grateful appreciation to Jim for my initial appointment to the Department of Geography, UQ as lecturer in 1984. Subsequently, I enjoyed and gained much from joint-teaching and research with Jim, including the innovative field-based program in New Zealand for UQ Geography Honours students which Jim and I supervised on three occasions in the late 1980s. As

a supportive member of the Royal Geographical Society of Queensland, Jim volunteered his time and energy to assist with the Australian Geography Competition and was awarded the Society's Thomson medal in 1994 for services to Geography. Jim returned to the US in 1999 to take up the position of Head of the Department of Geography, Geology and Planning at Missouri State University. He returned to Armidale, NSW in 2009 where he founded a demographic research and consulting group. Jim's passing is a great loss to the Geography community.

He is survived by his wife Sonya, and three children, Aaron, Siall and Aerion. (photo from UQ Archives, 6 September 1994)

Dr. Iraphne Childs. *RGSQ Vice-President; Honorary lecturer, SEES*

Welcome New Members

We have much pleasure in welcoming Graham Curtis, Ben Houseman, and Scott Kenneth, as new members. We hope your association with your new Society is long and mutually enjoyable.

Contributors

Kath Berg, Ralph Carlisle, Iraphne Childs, Len Lowry, Neville McManimm, Ron Owen, Kay Rees, Stephen Schwer, Pamela Tonkin

The **recording of the Society's July 2022 Lecture *Mad Dogs and Englishmen*** has been published on our YouTube channel:
<https://www.youtube.com/channel/UC2WD4ARJhBDIiOxa3qndb4Q>

RGSQ Bulletin

August 2022

Meeting/Lecture: August Lecture TBA

Tuesday 23 August

Geography in Conversation

A Power Network Fit for Purpose

Activities: 18 August

Roaming the Redlands Day Trip,

A Treks and Activities Committee Event

W: www.rgsq.org.au

E: info@rgsq.org.au

P: 07 3368 2066

The August Council will meet on the third Tuesday of the month.

The Royal Geographical Society of Queensland Ltd
PO Box 625, Spring Hill QLD 4004

**POSTAGE
PAID
AUSTRALIA**